

# 2020 STOCKADE BREWCO TRL STATE OF ORIGIN

## PLAYERS PACK

The contents of this publication may be updated at anytime. This includes but not limited too: protocols, processes and other relevant information.

Please refer to the [2020 TRL State of Origin website](#) for the latest version.

**Last Updated: 11th November 2020**



1

WELCOME



# Series Overview



## Most Significant Series

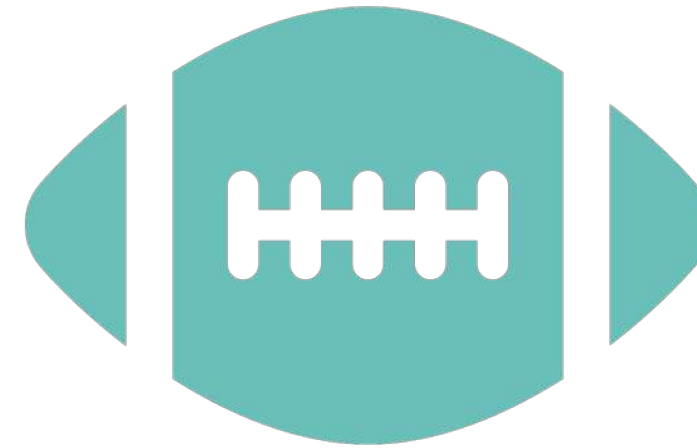
On the 5th anniversary of the first TRL State of Origin Series, in a year like no one, everything is to play for. State vs State.

1

## Spectators Are Back!

With TRL's most recent showpiece event (2020 QLD State Championships) unable to host spectators due to COVID-19 restrictions, we are pleased to welcome back spectators for this event.

2



3

## Lead Up to Rugby League SOO 3

Due to the scheduling of this year's Series, TRL SOO will take place in the hours leading up to Rugby League's SOO 3 fixture. The TRL SOO Series is expected to reach an audience of 100k people via livestream and other media channels (52k in 2019), smashing previous engagement and attraction for this Series.

# Officials' Oath



## Paul Hasemann – South Brisbane

On behalf of all appointed competition officials for the 2020 TRL State of Origin Series, I declare that we will carry out our separate duties in an honest and impartial manner.

We declare that we will treat each athlete competing at these Series in a fair and reasonable manner and without personal prejudice or bias.

We understand that our appointment to these Series is made on the basis of our acceptance of the responsibility given to us as representatives of TRL Australia.



# Players' Oath



## Georgia Craig – NSW Mixed

On behalf of all athletes competing at the 2020 TRL State of Origin Series, I declare that we will compete to the best of our ability in a manner that is fair to all athletes in this Series.

We declare that we will abide by the rules of game and will comply with all verbal and written instructions given to us by the appointed Series officials.

As athletes, we understand our responsibility to uphold the traditions of TRL Australia.



2

## EVENT OPERATIONS



# Event Structure



FIELD 1	TIME	FIELD 2
<b>3:30PM - OPENING CEREMONY</b>		
Men's 30s Game 1	<b>3:45 PM</b>	Women's Game 1
Mixed Game 1	<b>4:15PM</b>	Men's Game 1
Women's Game 2	<b>4:45PM</b>	Men's 30s Game 2
Men's Game 2	<b>5:15PM</b>	Mixed Game 2
Women's Game 3	<b>5:45PM</b>	Men's 30s Game 3
Men's Game 3	<b>6:15PM</b>	Mixed Game 3
<b>6:45PM - CLOSING CEREMONY</b>		

# Field Map

Carina Leagues Club  
(1390 Creek Road, Carina QLD 4152)



INSPIRE PHYSIO MARQUEE





# Broadcasting

## Overview

DoubleTake Sports have been a proud partner of Touch Rugby League for over 4 years and are back on board as the official broadcaster for the 2020 Stockade BrewCo TRL State of Origin Series.

**WEDNESDAY 18th NOVEMBER – 3:45pm to 6:45pm**

Broadcasting LIVE Field 1 games via the TRL: Touch Rugby League Australia Facebook page.

3:45pm - Men's 30s Game 1

4:15pm - Men's Game 1

4:45pm - Women's Game 2

5:15pm - Mixed Game 2

5:45pm - Women's Game 3

6:15pm - Men's Game 3

Please note, the playing and broadcast schedules are subject to change without notice, due to extra time and unforeseen circumstances.



# Two-Point Kick Tries

Reminder



Two-point kick tries will be in play at the 2020 TRL State of Origin Series.

Any try scored as a direct result of a kick (not passed) will be awarded 2 points. This includes AFL tries and women's tries – they will not compound.



# Event Photos

## Announcement



We are fortunate to have an Event Photographer, capturing the moments of this year's 2020 TRL State of Origin Series.

The Photos captured will be made available for public viewing within two weeks of the State of Origin Series.

All Captains will be provided with an update once these Photos are available. An announcement will also be posted on the [@touchrugbyleague](#) Instagram channel, upon release.



# Team Photos

## Announcement



Team Photos will be captured by our Event Photographer prior to the commencement of the Opening Ceremony, at 3:45pm.

Please allow enough time to be in Uniform, for your Team Photo to be captured, prior to the start of the Opening Ceremony.



# Physiotherapy

## Announcement



Our Official Physiotherapy Partner, **Inspire Physio**, will be providing physio and sports trainer services throughout the duration of the event.

They will be available from 3:45pm to 6:45pm.

Please refer to the Field Map on Page 8 to find the *Inspire Physio Marquee* location.



# Uniforms

## Delivery of On Field & Off Field Uniforms



Thank you to **EMU | EV2 Sportswear** who have tirelessly designed and manufactured the Uniforms for the 2020 TRL State of Origin Series.

All Uniforms are due to arrive by Friday 13<sup>th</sup> November at TRL Australia HQ.

Upon arrival to TRL Australia HQ, your Team Captain will be informed when they are ready for pickup. Please consult your Team Captain to keep up-to-date, as to when you'll receive your Uniform.

Please note, only official 2020 TRL State of Origin Uniforms can be worn at this event, both on and off the field.



# Food & Drinks

## BYOs

### WHAT YOU CAN BYO

Food and non-alcoholic beverages.

### WHAT YOU CAN'T BYO

No marquees.

No player, spectator and/or member of the general public is allowed to bring alcohol into the Carina Leagues Club precinct. There will be designated areas at these venues whereby the consumption of alcohol can take place.

--

There will be a vast array of food and drink (alcoholic and non-alcoholic) offerings available during the Series.

Please note that uniformed and plain-clothed police and other authorities will be conducting event checks throughout to ensure the safety of all players, spectators and members of the public is upheld.



3

## PLAYER REGISTRATION





# Player Registration

## Overview



All players are required to REGISTER online to play in the 2020 TRL State of Origin.

Registration is completed for three reasons:

1. To ensure all players are covered by the TRL Australia Standard Insurance Policy;
2. TRL Australia is aware of all players who are competing within this event, to ensure all players comply with the Eligibility Rule for these Series:

A player selected to represent QLD or NSW for this event, has a legitimate tie to their state of representation (e.g. such as birth location etc.); and

3. To abide by the Queensland Government's COVID-19 Operating Protocols and Restrictions for Sporting Events.

**REGISTRATION must be completed by Sunday 15th November, 11:59pm.**

Please review the steps on the next page to complete Registration.



# Player Registration

## Online Registration Process



1. Every player must go to the following link:  
<https://www.trl.com.au/spawtz-player-registrations/>
2. Under Representative Events, choose “2020 Stockade BrewCo Festival of TRL – Player Registration”;
3. Under the “Team Name” search field, type in your team’s name (e.g. NSW Men’s 30s) and select your Team (ensuring the League associated is “2020 TRL State of Origin - 2020 Representative Events”);
4. Click “Join This Team”;
5. You will be prompted to sign in with your TRL Spawtz Login details. Please note, these login details are different to your region’s Spawtz login (i.e. different to TRL North Brisbane, TRL South Brisbane etc.).

If you did not play in the 2019 or 2020 TRL QLD State Championships, you will have to Register as a new user.

6. Once you’ve successfully logged in, you’ll be presented with the “Apply to Join a Team” page. Click “Join this team” and the Captain assigned to manage your team, will be sent a request.

They will accept this request to approve your registration to the 2020 Stockade BrewCo TRL State of Origin Series. No further action is required from you, as a player.



4

**ENGAGE WITH TRL**



# Merchandise



Link: [EMU TRL Merchandise Shop](#)

- ⚽ A reminder that the TRL Merchandise Shop, proudly run and stocked by our Official Apparel Partner [EMU | EV2 Sportswear](#) is LIVE. Please visit the link at the top of this page to access the Shop and to place orders.
- ⚽ This Shop is available 24 hours a day, 365 days a week.



- ⚽ Please note, orders placed between now and the Series will not be delivered in time for the event. They will be delivered to your nominated address post-event.
- ⚽ Delivery is the only option at this time, no pick up method is available.

# Media & Partners



## ONLINE

**TRL: Touch Rugby League Australia**

[www.trl.com.au](http://www.trl.com.au)

**2020 Festival of TRL**

[www.trl.com.au/elite/2020-festival-of-trl/](http://www.trl.com.au/elite/2020-festival-of-trl/)

## SOCIAL MEDIA

**Instagram**

@touchrugbyleague

Tag both @touchrugbyleague and @trlyourregion in your Instagram Stories to be mentioned across these platforms (e.g. @trlrockhampton)

**Facebook**

[TRL Australia](https://www.facebook.com/TRLAustralia)



5

HOST CITY: BRISBANE



**brisbane**  
ECONOMIC DEVELOPMENT AGENCY  
BRISBANE CITY COUNCIL

# Brisbane is Game On When It Comes to Fun



Touch down in Brisbane and discover a lively lifestyle city ready to show you a good time. You won't have to try and fall in love with Brisbane's bites, bars and brews. You'll adore them regardless. If you want to get active, take part in outdoor adventures with your teammates, friends and family.



# Brisbane is Game On When It Comes to Fun



When not on the field, head out and choose from divine rooftop bars, bountiful breweries and terrific taverns with wide beer gardens and awesome views. Visit Howard Smith Wharves, where boutique beers and captivating cocktails can be enjoyed right on the riverfront, alongside casual eats and fine dining. Fortitude Valley is the place to enjoy nightclubbing and live music while you join the locals for a schooner in Newstead's craft breweries.





# Brisbane is Game On When It Comes to Fun

Get the team together and pursue outdoor adventures. At Kangaroo Point, you can go sky high with the Story Bridge Adventure Climb and dare your friends to do a Cantilever Lean Out or Walk The Plank experience high above the river. Nearby, Riverlife offers group kayaking, rock climbing and abseiling experiences. Get on the river and explore Brisbane's precincts on a CityCat ferry or book a twilight cruise with Miramar Cruises. You'll have a ball.



# Old Friends NEW EXPERIENCES

Discover why Brisbane's bar & dining scene is attracting acclaim by sampling its bountiful bars, bites and brews. The city's old favourites are reopening, and hip new restaurants, bars and cafes are throwing open their doors. Whether in the city or surrounding region, discover dining spots with spectacular views or rooftop bars that will have you soaking up sensational sunsets and revelling in Brisbane's alfresco lifestyle.

MR PERCIVAL'S

DISCOVER | PLAN | EXPERIENCE  
[visitbrisbane.com.au](http://visitbrisbane.com.au)

📍 Mr. Percivals, Howard Smith Wharves



**brisbane**

# COVID-SAFE PRACTICES



# COVID-SAFE Operations

## COVID-SAFE Coordinator

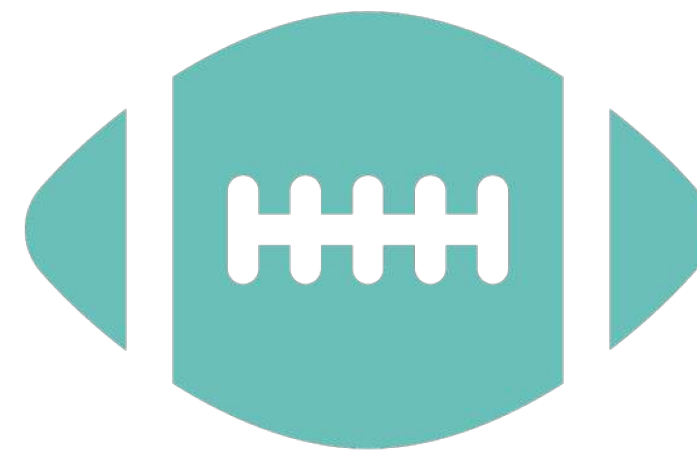
In addition to Venue Managers & Referees, the coordinator's responsibility is to uphold our new competition operational standards.

1

## Physical Distancing

The utilisation of multiple marquee areas have been implemented to ensure COVID-19 restrictions are abided and the health of all persons is of utmost priority.

2



3

## Hygiene Practices

Between games, footballs will be disinfected along with other high contact surfaces to promote a safe environment for all persons.

4

## COVID-SAFE Indicators

Visual indicators will be present throughout competition venues, to ensure outdoor gatherings protocols are adhered to.

5

## Contactless Interactions

Captains will not be required to sign scoresheets but verbal communication will be key during these pre and post game processes. No handshakes at anytime.

# Take steps to protect yourself before TRL

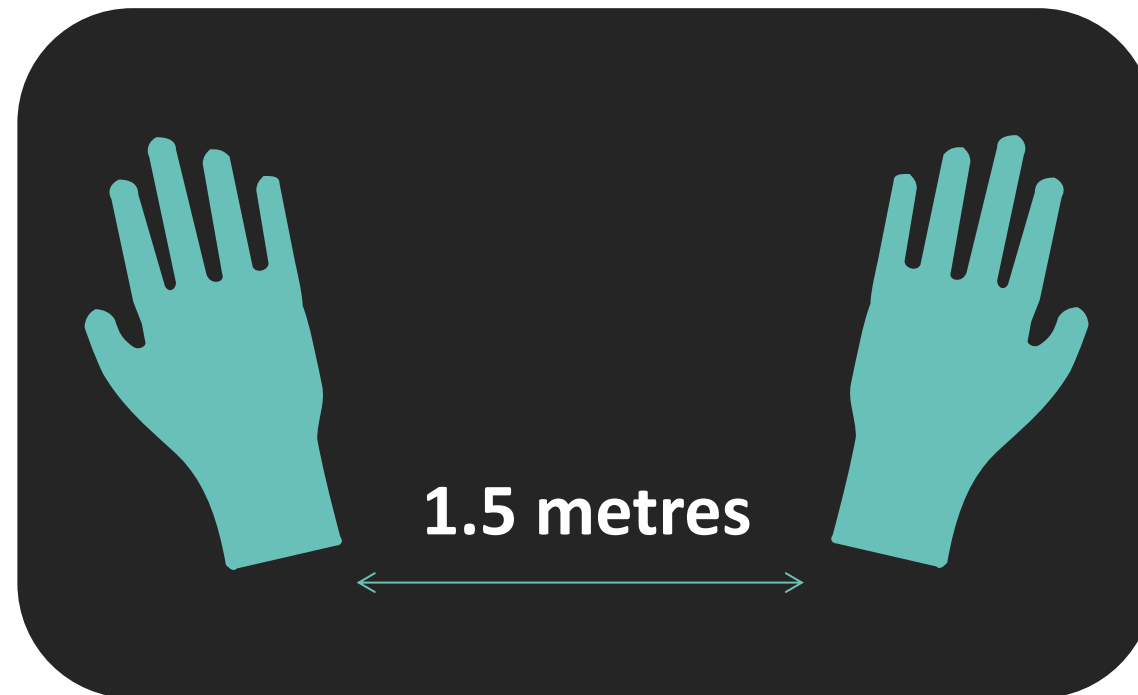
1

personal hygiene



2

physical distancing



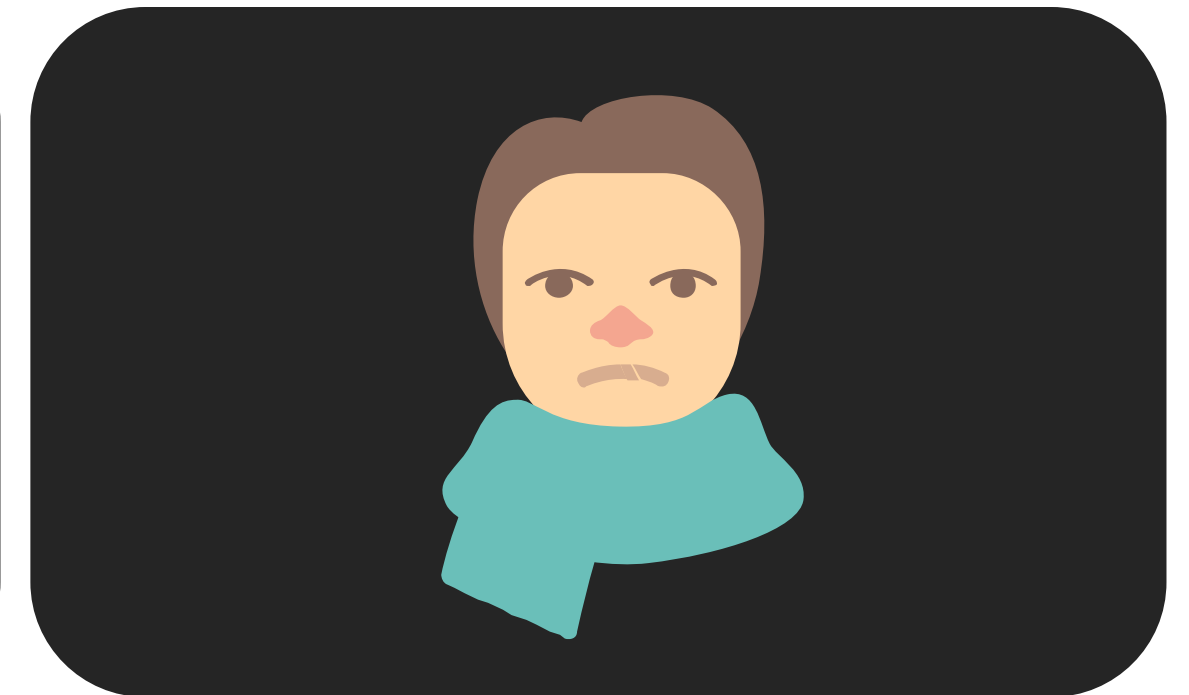
3

download COVID-SAFE app



4

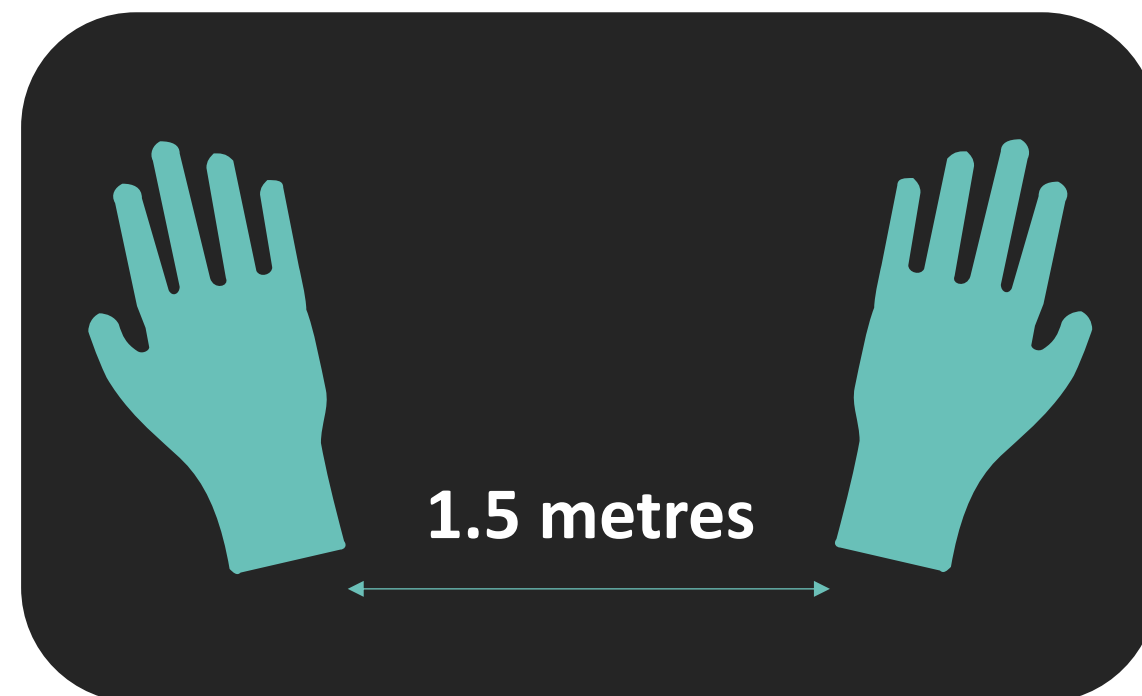
stay home if you're unwell



# Take steps to protect yourself during TRL

1

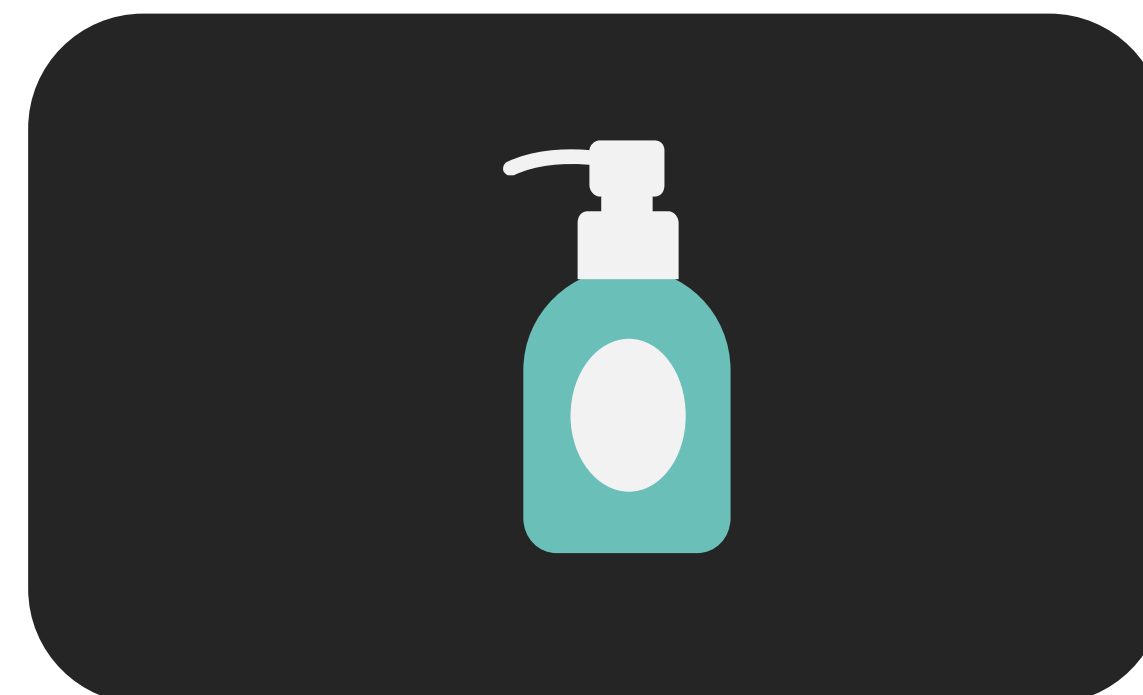
## physical distancing



Outside of the field of play, please keep your distance and avoid contact such as handshakes.

2

## hygiene stations

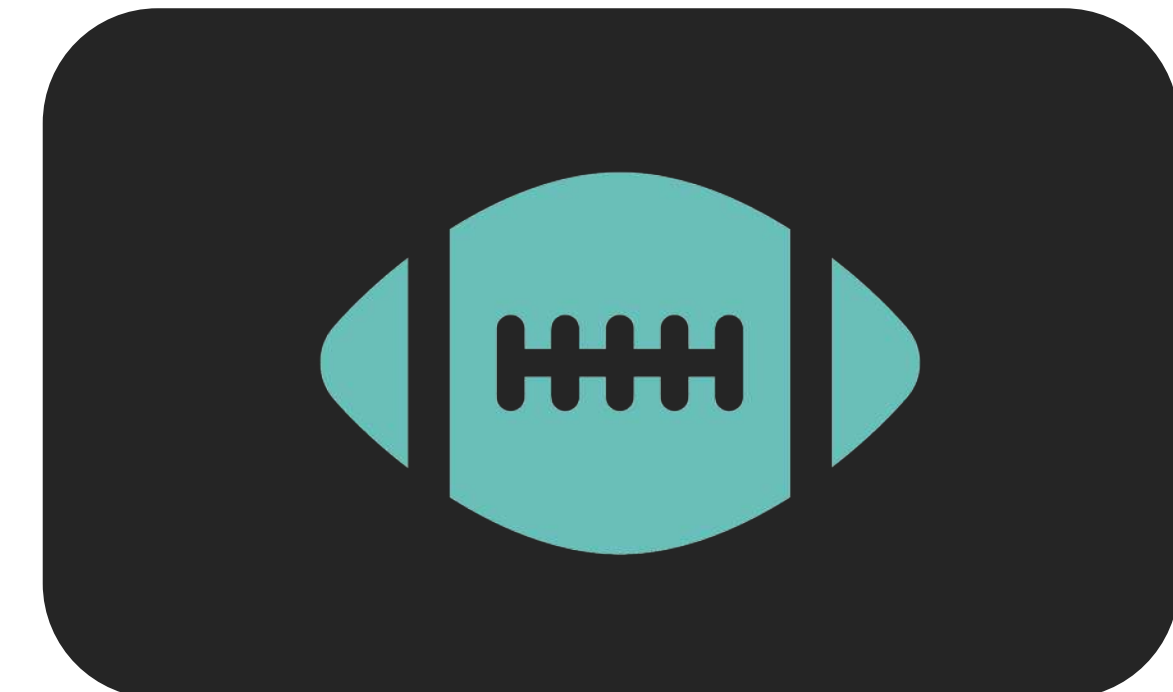


Please utilise the Hygiene Stations, located on the sideline of every playing field.

This station offers hand sanitiser and disinfectant spray to ensure all players have the opportunity to take care of their own personal hygiene.

3

## play your part

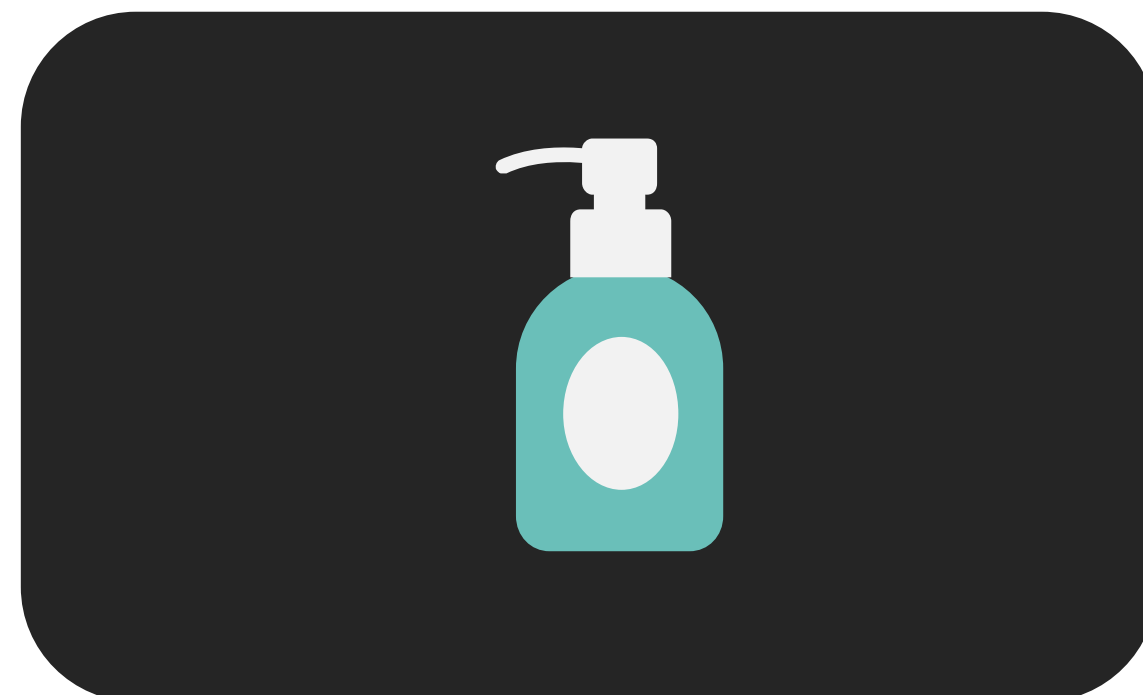


Your support of TRL and those around you ensures a safe and enjoyable experience for all. Everyone has a part to play.

# Take steps to protect yourself after TRL

1

## hygiene stations



Please utilise the Hygiene Station provided on the sideline of your playing field post-game.

2

## safe spectating



When not playing but spectating games, please observe COVID-SAFE protocols including physical distancing requirements

3

## put yourself first



Once you arrive home, a post-game shower is an important way you can maintain your own personal hygiene after exercise.

# COVID-SAFE Indicators



Multiple TRL COVID-SAFE Indicators (including the two below) will be present at the Series in appropriate locations, to ensure your personal health and wellbeing is of the utmost priority.

## HYGIENE STATION

Please follow the 4 P's below to look after your health and the health and all persons at this venue. Thank you for your cooperation.

<p><b>1</b></p> <p><b>physical distancing</b></p>  <p>Outside of the field of play, please keep your distance and avoid contact such as handshakes and hi-fi's.</p>	<p><b>2</b></p> <p><b>please don't play unwell</b></p>  <p>If you are unwell, please do not play. We respectfully request that you take yourself home immediately, if you are unwell.</p> <p>Please do not return to TRL until you are in good health.</p>	<p><b>3</b></p> <p><b>personal hygiene</b></p>  <p>Please utilise the hand sanitiser and disinfectant spray provided on this table, prior to entering the field of play. You're welcome to utilise these items at anytime throughout the competition.</p>	<p><b>4</b></p> <p><b>please leave after game</b></p>  <p>Thank you for your support and enjoy your game of TRL!</p> <p>Please leave the venue immediately upon the conclusion of your game. A post-game shower is one way you can ensure your own personal hygiene after exercise.</p>
--	--	--	--



**PLEASE MAINTAIN 1.5 METRES OF PHYSICAL DISTANCING BETWEEN YOU AND THE NEXT PERSON, IN THIS AREA.**

**YOUR COOPERATION AND SUPPORT IS GREATLY APPRECIATED.**

**ENJOY YOUR GAME OF TRL!**



# Enquiries & Support



Please contact your  
Team Captain for  
Support